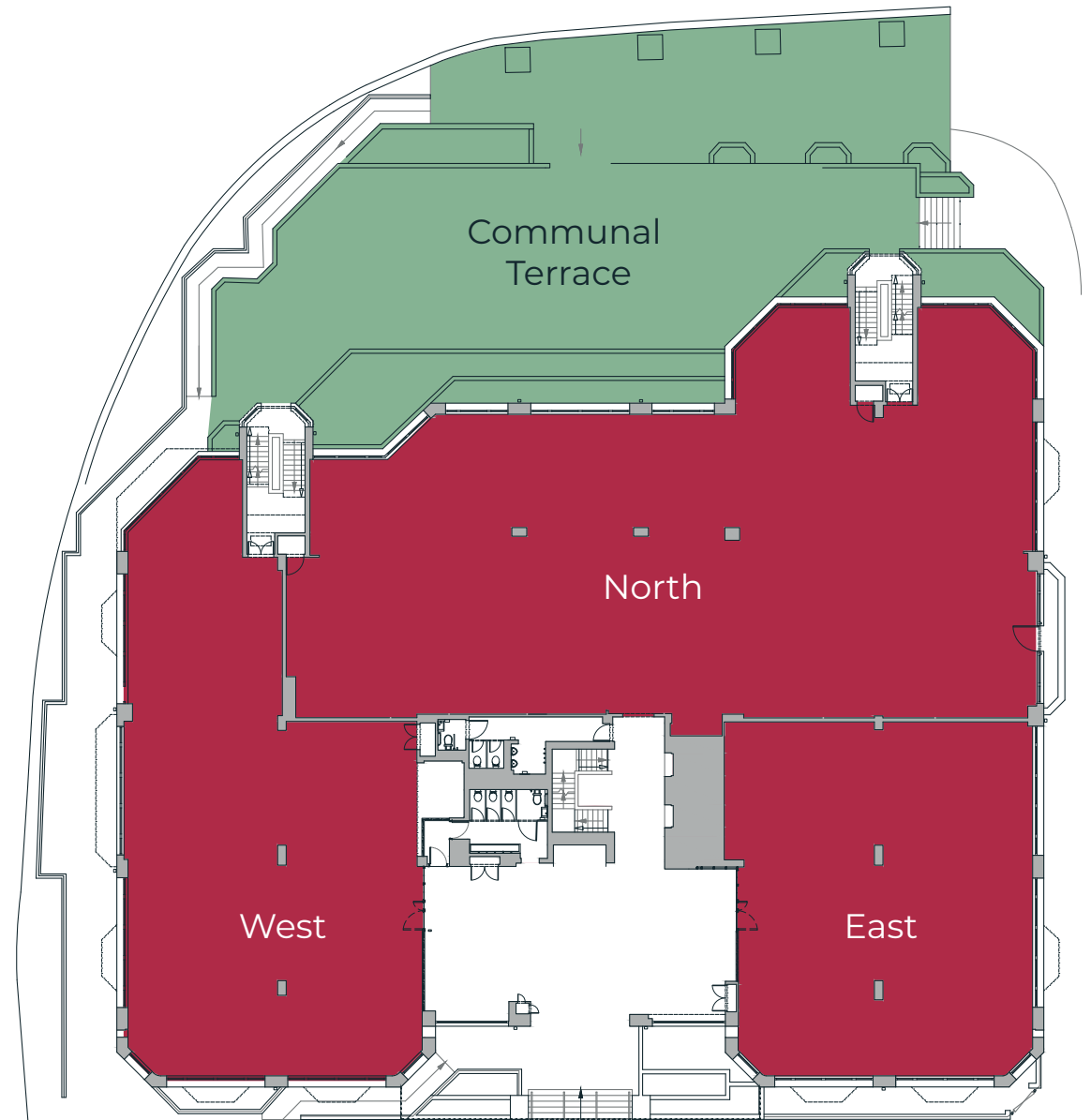


Ground Floor

	sq ft	sq m
Fourth Floor	4,469	415.2
Part Third Floor (East)	8,346	775.4
First Floor	14,365	1,344.5
First Floor Terrace	861	79.9
Part Ground Floor (West)	3,645	338.6
Part Ground Floor (East)	2,961	275.1
Fully Fitted Suite		
Part Ground Floor (North)	6,309	586.1
Total	40,095	3,725

Car parking spaces at a ratio of 1:1,000 sq ft

The above areas are IPMS 3 measurements.



ABBEY WHARF

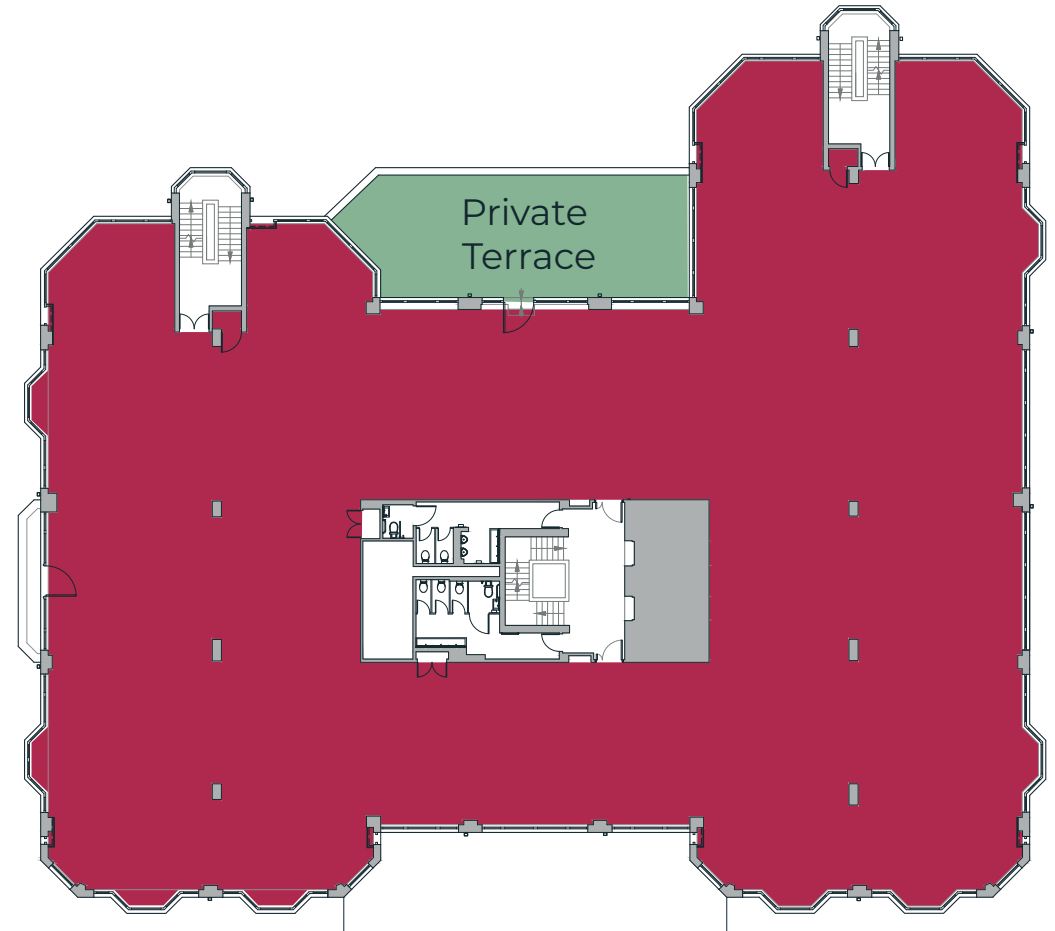
57 KINGS ROAD | READING

First Floor

	sq ft	sq m
Fourth Floor	4,469	415.2
Part Third Floor (East)	8,346	775.4
First Floor	14,365	1,344.5
First Floor Terrace	861	79.9
Part Ground Floor (West)	3,645	338.6
Part Ground Floor (East)	2,961	275.1
Fully Fitted Suite		
Part Ground Floor (North)	6,309	586.1
Total	40,095	3,725

Car parking spaces at a ratio of 1:1,000 sq ft

The above areas are IPMS 3 measurements.



ABBNEY WHARF

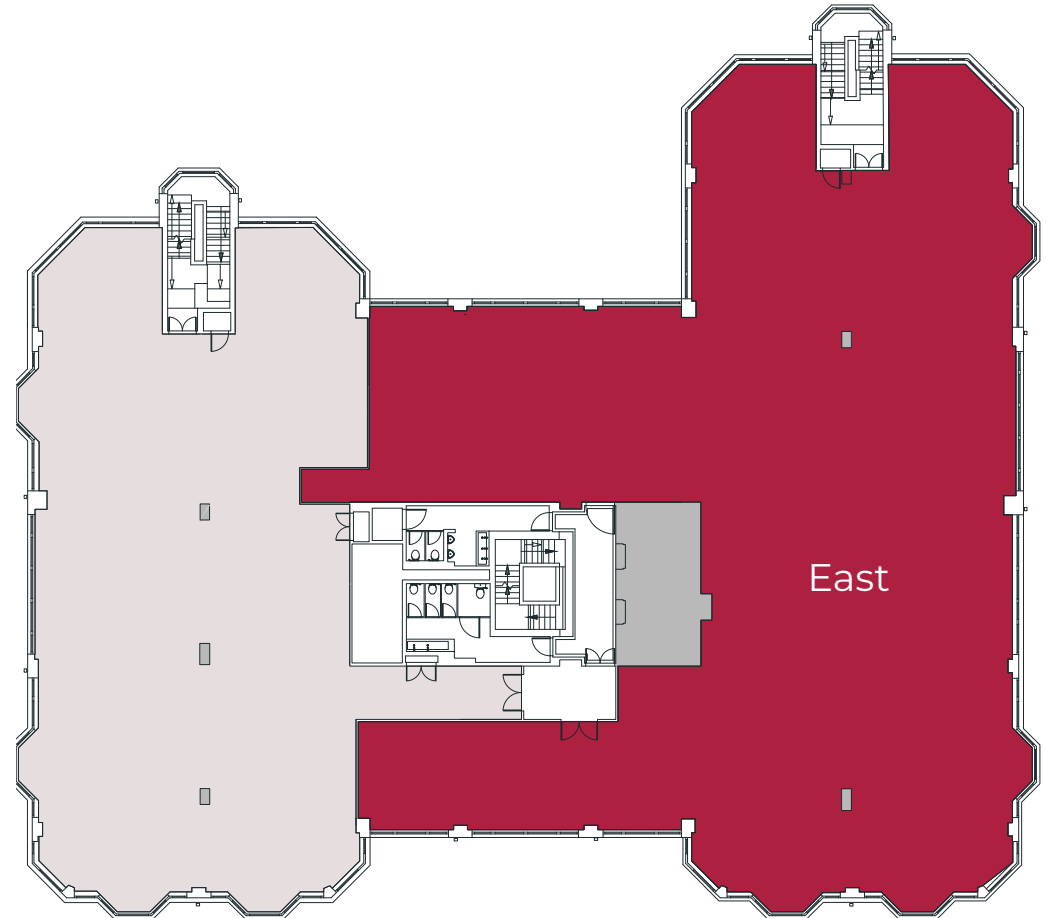
57 KINGS ROAD | READING

Third Floor

	sq ft	sq m
Fourth Floor	4,469	415.2
Part Third Floor (East)	8,346	775.4
First Floor	14,365	1,344.5
First Floor Terrace	861	79.9
Part Ground Floor (West)	3,645	338.6
Part Ground Floor (East)	2,961	275.1
Fully Fitted Suite		
Part Ground Floor (North)	6,309	586.1
Total	40,095	3,725

Car parking spaces at a ratio of 1:1,000 sq ft

The above areas are IPMS 3 measurements.



ABBNEY WHARF

57 KINGS ROAD | READING